

MixRite 3.5 0.5-5%

For PVDF and Hybrid Models



SEAL KIT

REPLACEMENT GUIDE

Tefen Flow and Dosing Technologies Ltd.
Kibbutz Nahsholim 3081500, Israel

Tel +972 4 6395550

Fax +972 4 6390813

Website: www.tefentech.com

Email: info@tefentech.com

SEALS REPLACEMENT

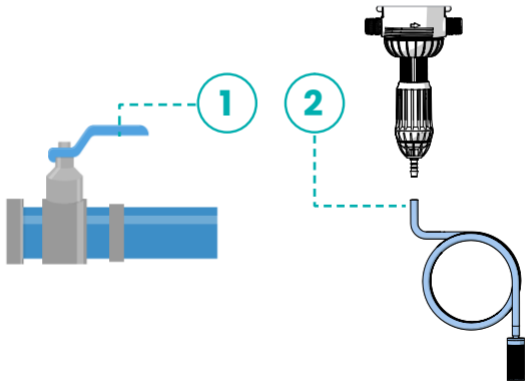


Changing the seals on MixRite 3.5 0.5-5% is done annually (based on usage) or when following malfunctions occur:

- The pump “stutters” or does not operate at all during low flow.
- Irregular suction or lack of suction.

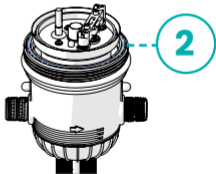
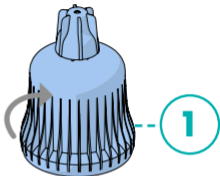
PREPARATION

1. Turn off the water supply and verify that there is no pressure in the pipe.
2. Remove the suction tube.



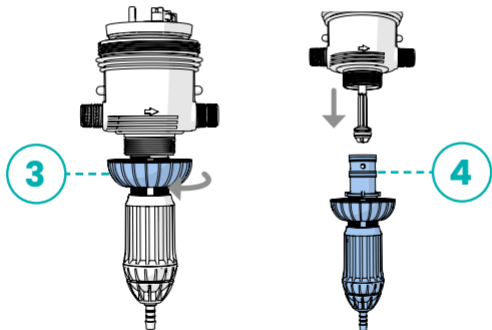
DISASSEMBLY

1. Remove the top cover by rotating it counter-clockwise.
2. Ensure the O-ring remains in place.



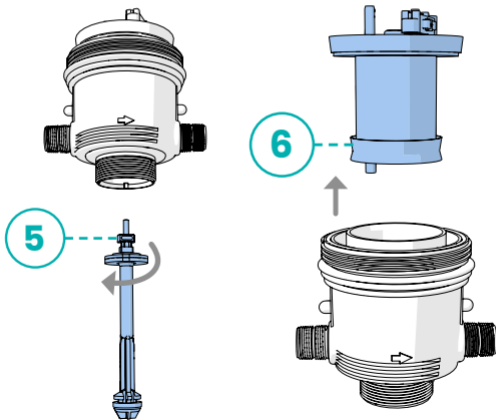
Note: Rotation directions in this document are presented from the top view perspective of the rotated item.

3. Release the cylinder support nut by rotating it quarter turn clockwise.
4. Pull out the cylinder support unit.



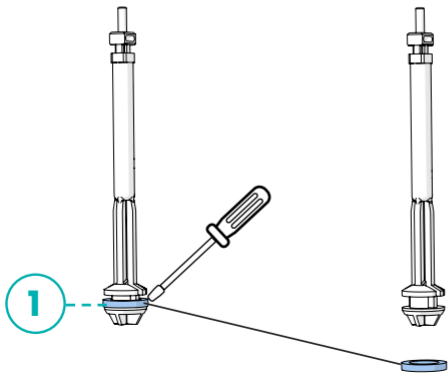
Note: Pulling out the cylinder support unit may require applying slight force.

5. Release the piston by rotating it clockwise.
6. Pull out the cylinder support unit.



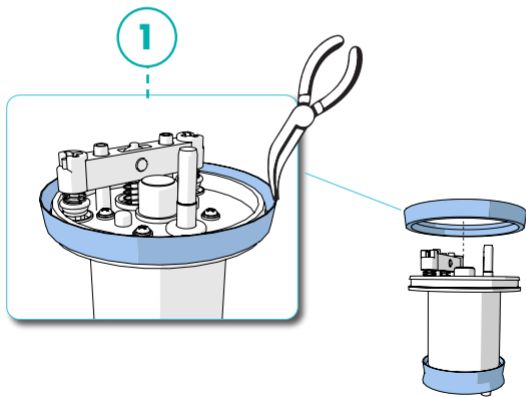
SUCTION SEAL REPLACEMENT

1. Remove the suction seal using screwdriver.
2. Place a new seal on the bottom of the suction piston.



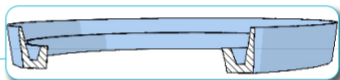
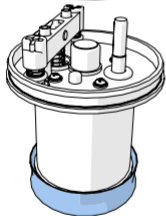
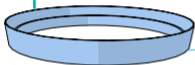
ENGINE TOP SEAL

1. Gently pull out the seal from the top of the engine using long-nose pliers.



2. Place a new seal on the top of the engine.

2



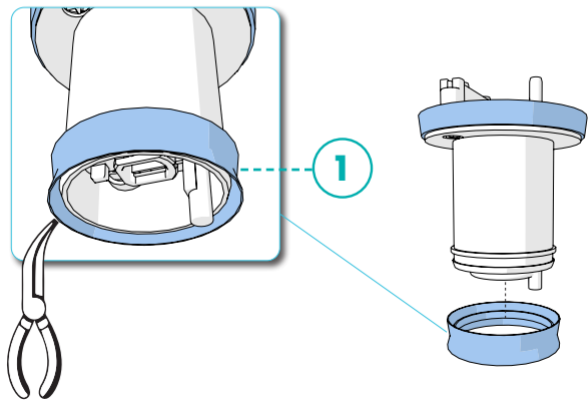
Verify seal orientation
(wide side up)



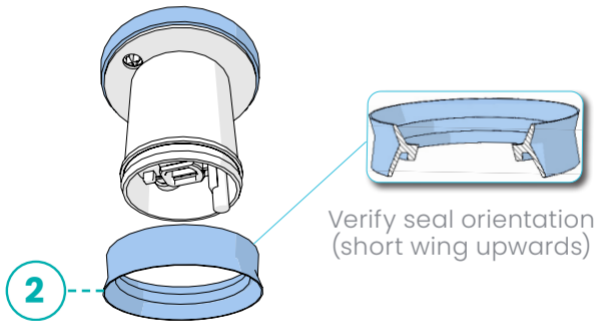
Note: Do not use tools to place the seal. If needed, put the seal in hot water to make placement easier.

ENGINE BOTTOM SEAL

1. Gently pull out the seal from the bottom of the engine using long-nose pliers.



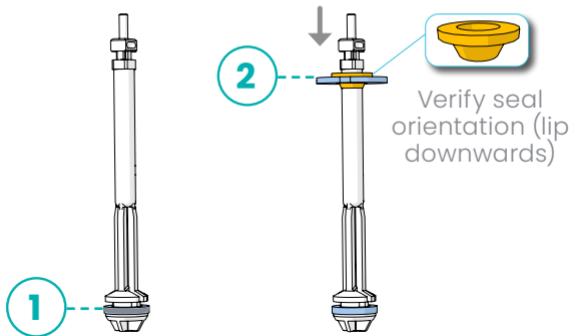
2. Place a new seal on the bottom of the engine unit.



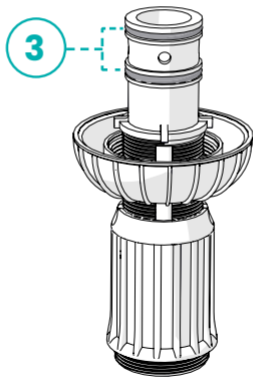
Note: Do not use tools to place the seal. If needed, put the seal in hot water to make placement easier.

REASSEMBLY

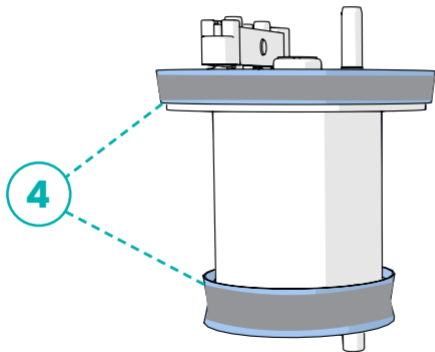
1. Place a new seal on the bottom of the suction piston.
2. Place a disc and a new conical seal onto the suction piston.



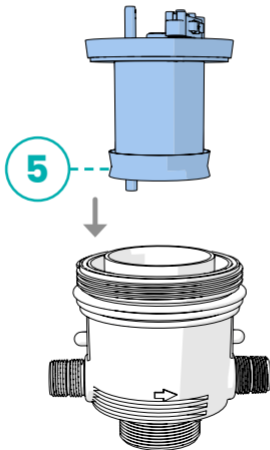
3. Apply silicone grease on two O-rings and then place the cylinder support unit into the base.



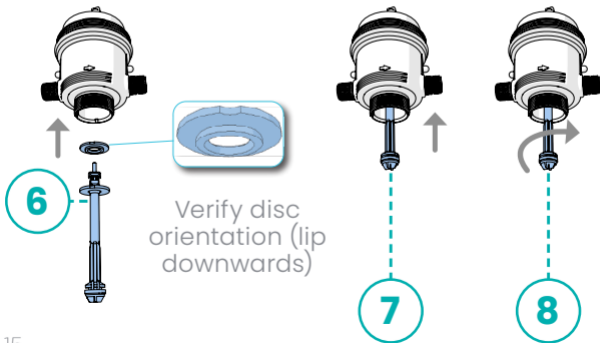
4. Apply silicone grease on top and bottom engine seals.



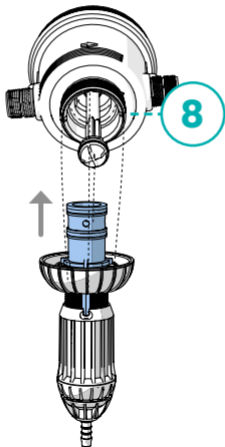
5. Insert the engine unit into the base.



6. Insert the top disc into the base.
7. Insert the piston into the base.
8. Secure the piston by rotating it a quarter turn counter-clockwise.

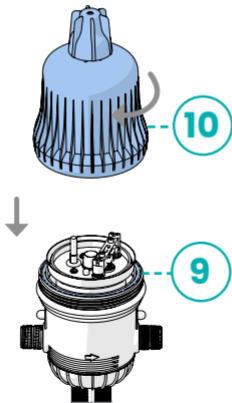


8. Insert the cylinder into the cylinder support unit.



9. Ensure the O-ring is in place.

10. Close the top cover by rotating it clockwise.



Scan the QR Codes:



Download the TEFEN
Application



Full MixRite 3.5 Installation and
Operation Guide