

MixRite 3.5 1 - 10%

For PVDF, Hybrid and IBP-models



SEAL KIT

REPLACEMENT GUIDE

Tefen Flow and Dosing Technologies Ltd.

Kibbutz Nahsholim 3081500, Israel

Tel +972 4 6395550

Fax +972 4 6390813

Website: www.tefentech.com

Email: info@tefentech.com

SEALS REPLACEMENT

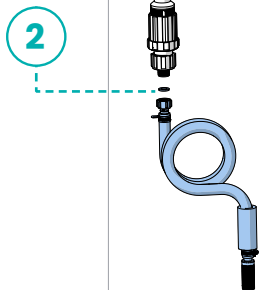
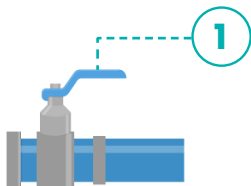


Changing the seals on MixRite 3.5 1-10% is done annually (based on usage) or when following malfunctions occur:

- The pump “stutters” or does not operate at all during low flow.
- Irregular suction or lack of suction.

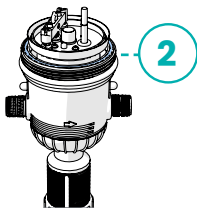
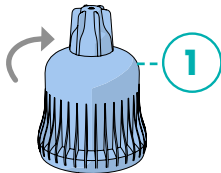
PREPARATION

1. Turn off the water supply and verify there is no pressure in the pipe.
2. Release the hose nut and remove the suction tube. Ensure the seal ring remains in place.



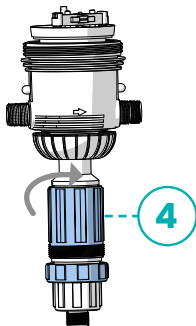
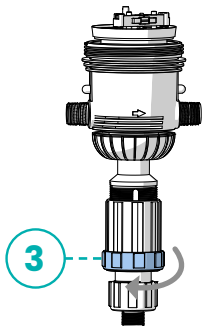
DISASSEMBLY

1. Remove the top cover by rotating it counter-clockwise.
2. Ensure the O-ring remains in place.

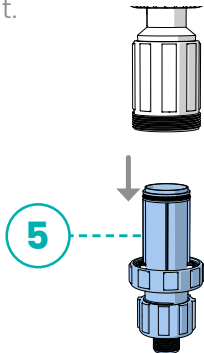


Note: Rotation directions in this document are presented from the top view perspective of the rotated item.

3. Release the support nut by rotating it clockwise.
4. Raise the dosage adjustment nut by rotating it counter-clockwise.

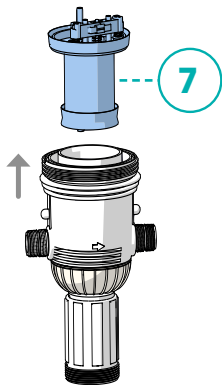
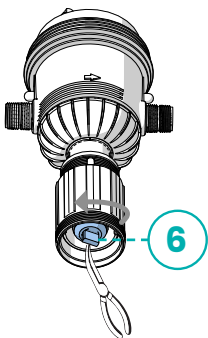


5. Pull out the cylinder from the cylinder support unit.

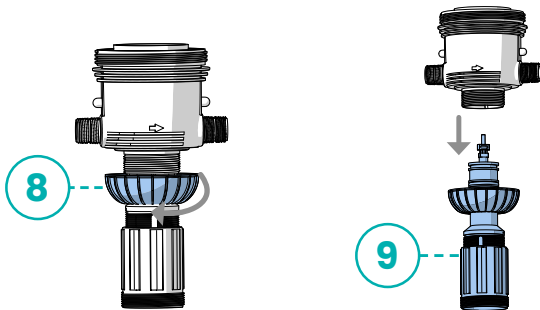


Note: Pulling out the valve may require applying slight force.

6. Turn the piston end a quarter turn counter-clockwise using long-nose pliers while holding the engine.
7. Pull out the engine unit.



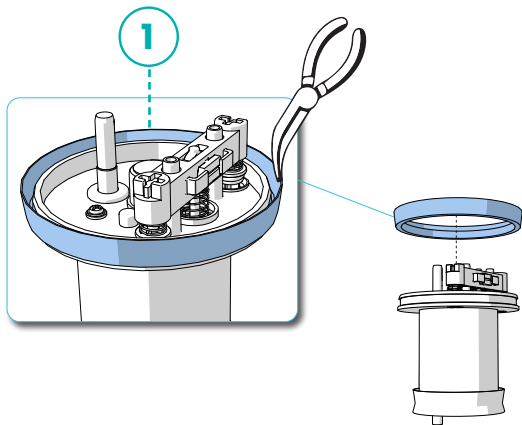
8. Release the cylinder support nut by rotating it clockwise.
9. Pull out the cylinder support unit.



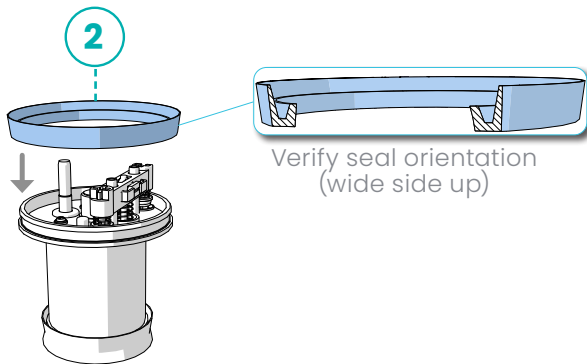
Note: Pulling out the cylinder support unit may require applying slight force.

ENGINE TOP SEAL

1. Gently pull out the seal from the top of the engine using long-nose pliers.



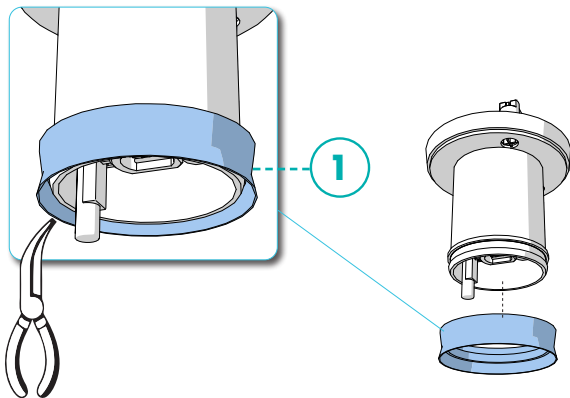
2. Place a new seal on the top of the engine.



Note: Do not use tools to place the seal. If needed, put the seal in hot water to make placement easier.

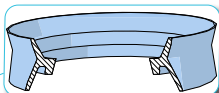
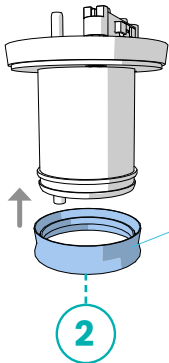
ENGINE BOTTOM SEAL

1. Gently pull out the seal from the bottom of the engine using long-nose pliers.



ENGINE BOTTOM SEAL PLACING

2. Place a new seal on the bottom of the engine.



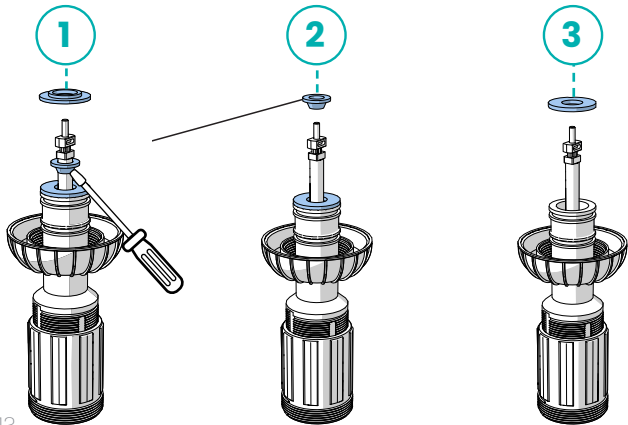
Verify seal orientation
(short wing upwards)



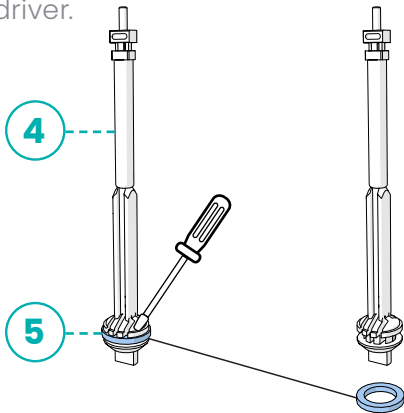
Note: Do not use tools to place the seal. If needed, put the seal in hot water to make placement easier.

SUCTION PISTON SEALS

1. Remove the disc.
2. Remove the conical seal using a screwdriver.
3. Remove the second disc.

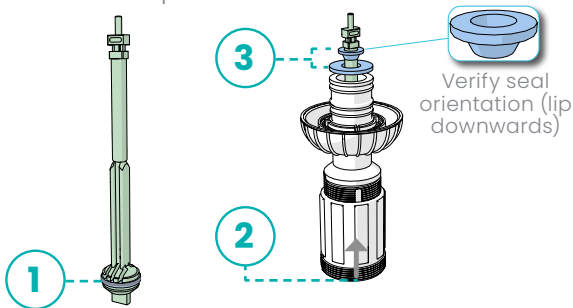


4. Remove the suction piston from the cylinder support unit.
5. Remove the bottom seal using a screwdriver.

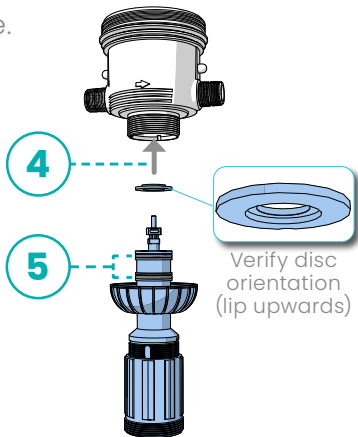


REASSEMBLY

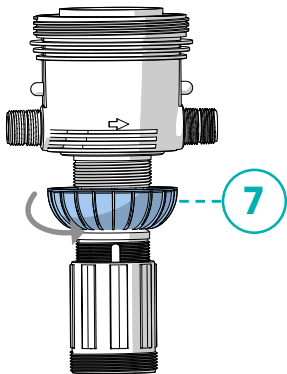
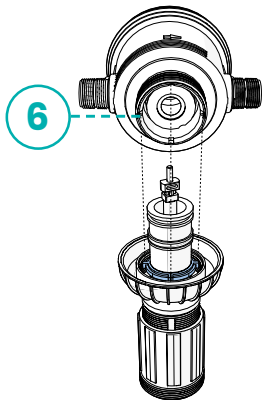
1. Place a new seal on the bottom of the suction piston.
2. Insert the suction piston into the cylinder support unit.
3. Place a disc and a new conical seal onto the suction piston.



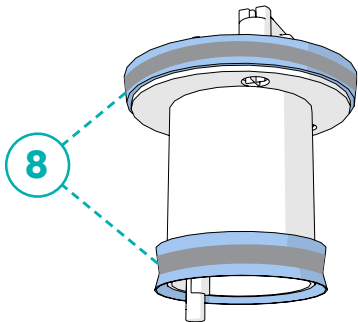
4. Insert the upper disk.
5. Apply silicone grease on two O-rings and then place the cylinder support unit into the base.



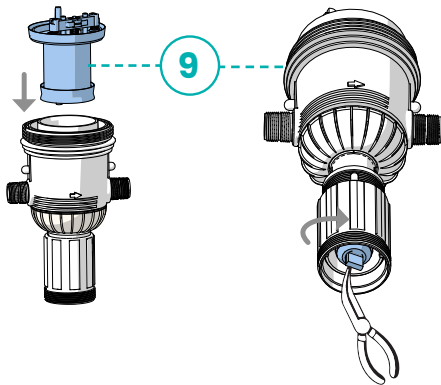
6. Ensure all tenon are inserted into the corresponding slots in the base.
7. Close the cylinder support nut by rotating it counter-clockwise.



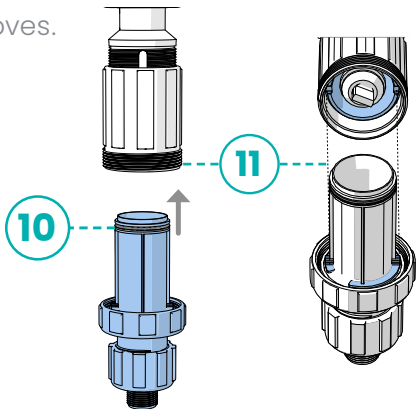
8. Apply silicone grease on top and bottom engine seals.



9. Insert the engine unit into the base and turn the piston end a quarter turn counter-clockwise using long-nose pliers.

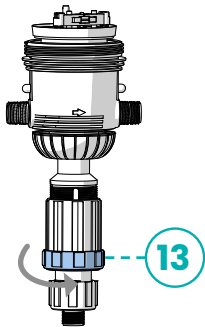
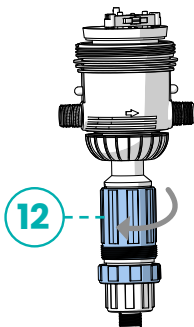


10. Apply silicone grease to the O-ring.
11. Insert the cylinder into the cylinder support unit and verify orientation of the ring and grooves.

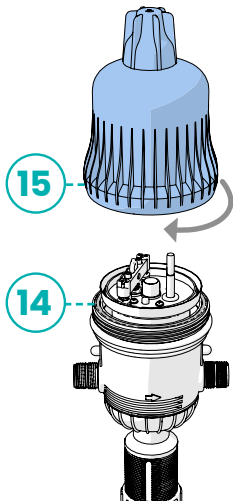


12. Lower the dosage adjustment nut by rotating it clockwise.

13. Close the nut by rotating it counter-clockwise.



14. Apply silicone grease to the O-ring and ensure it is in place.
15. Close the top cover by rotating it clockwise.



Scan the QR Codes:



Download the TEFEN
Application



Full MixRite 3.5 Installation and
Operation Guide